

Auto Breech Lock Pro *quick* start guide

Refer to safety guidelines and detailed steps in the instruction manual



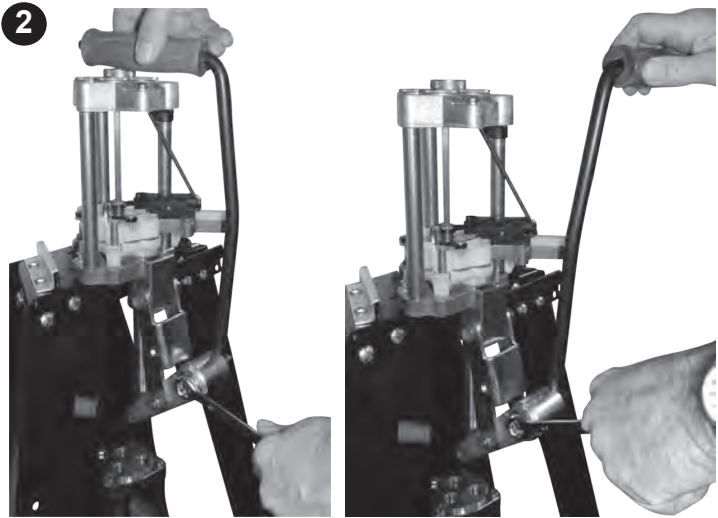
- 1** Press fits directly on LEE Steel Base Block included with Reloading Stand # 90688 or Bench Plate # 90251.

- OR -

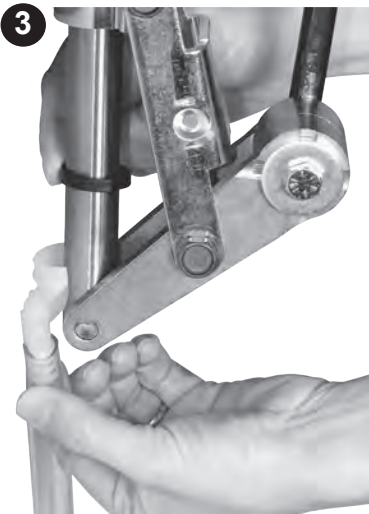
Hold this card against work bench edge, fold at dotted line, drill three 17/64" (7mm) holes in your work bench using this card as a drill template.

work bench edge

FOLD



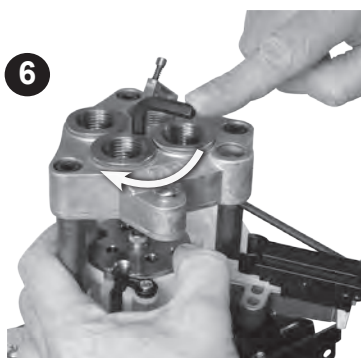
Re-position handle, tighten securely with 1/2" wrench.



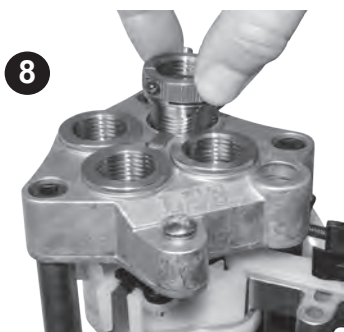
Install spent primer tube.



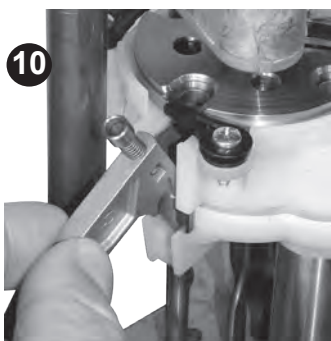
Remove lock-ring eliminator



Raise carrier to the mid-stroke position, install shell plate, lightly tighten clockwise with 1/4" hex head wrench



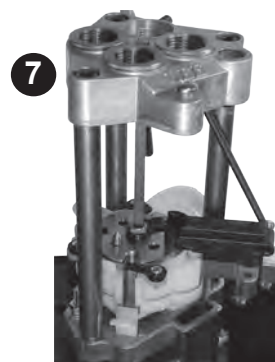
Install lock-ring eliminator.



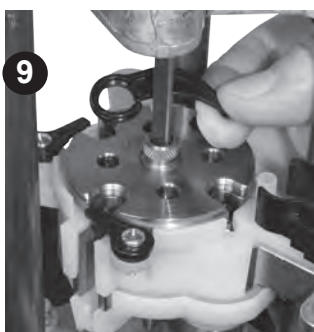
Install large or small primer arm.



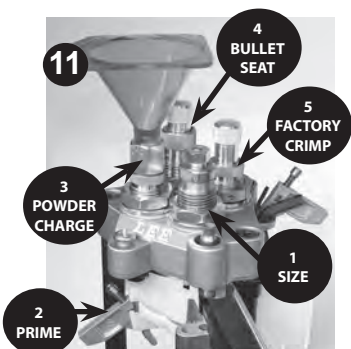
Remove index rod and case ejector.



With the carrier at the bottom of the stroke (handle up), install index rod.



Install case ejector.



Install dies according to reloading die instructions.

IMPORTANT Lee die set users
Screw the # 1 sizing die in until it touches the shell plate. Lower the ram, and screw die in 1/3 turn more.